

N 7th St

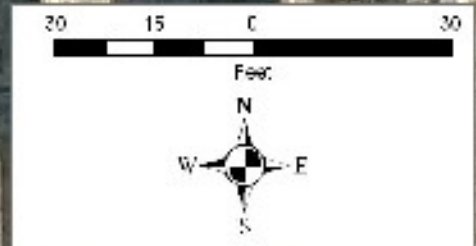
N 8th St



700 Block.

4 racks spaced 2.5' apart on 11.5x8 pad near Clear Creek Coop, Summersault and Veach's. There are regularly 4 to 5 bikes chained to poles and trees in the area.

2' between sides and rear of pad and racks.



S 7th St

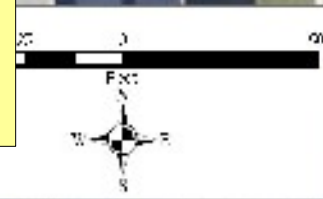
S 8th St

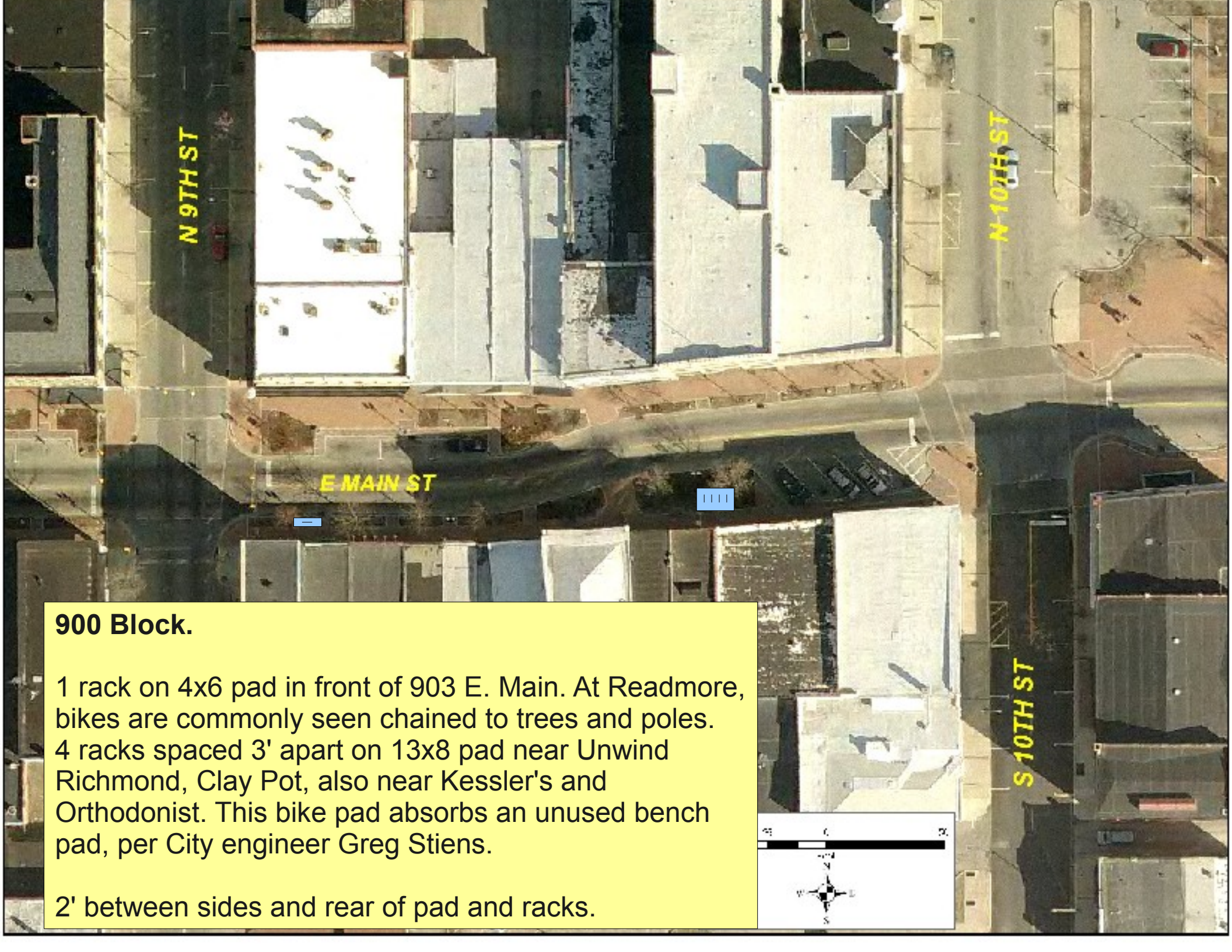


800 Block.

3 racks spaced 2.5" apart on 9x6 pad in front of Ray Ontko / Doxpop, where there are several bike commuters. Tom's Deli is also serviced by this location.

2' between sides and rear of pad and racks.





N 9TH ST

N 10TH ST

E MAIN ST

S 10TH ST

||||

—

900 Block.

1 rack on 4x6 pad in front of 903 E. Main. At Readmore, bikes are commonly seen chained to trees and poles. 4 racks spaced 3' apart on 13x8 pad near Unwind Richmond, Clay Pot, also near Kessler's and Orthodontist. This bike pad absorbs an unused bench pad, per City engineer Greg Stiens.

2' between sides and rear of pad and racks.

